

Innovation, Research, Practical Solutions

The NTRO offers all levels of government and industry great outcomes across all modes of transport. It provides innovative research and practical solutions to challenges across road, rail, ports and airports, developing new knowledge, innovation, standards and specifications to shape our transport future.

Building upon 60+ years of experience through the Australian Road Research Board (ARRB) and Australasian Centre For Rail Innovation (ACRI), the NTRO now services the Australian and New Zealander communities as the central hub of transport research, policy and project work.

As road agencies have transformed into transport agencies in Australia and New Zealand, our 'integrated' transport research, innovation and experience has been increasingly sought to drive innovative outcomes across rail, ports and airport projects.

With over 240 people and offices in Brisbane, Sydney, Canberra, Adelaide, Perth and a world leading sustainable materials research laboratory and office in Melbourne, NTRO is set to transform the way we design, build, use and maintain our current and future transport infrastructure.

We are directly meeting the need for the multi-modal approach to transport policy and operations across Australia and New Zealand.

Our skillsets - including our decades of experience in asset management and infrastructure performance and measurement - provide a platform for our offering within the rail, ports and airports sectors.

We can help



LOCAL, STATE
AND FEDERAL
GOVERNMENTS



TRANSPORT
AGENCIES



TRANSPORT
LOGISTICS
COMPANIES



RAIL
OPERATORS



PORT AND
PRIVATE
TERMINAL
OPERATORS



STEVEDORING
& FREIGHT
MANAGERS



AIRPORTS &
AIRFIELDS -
PUBLIC AND
PRIVATE

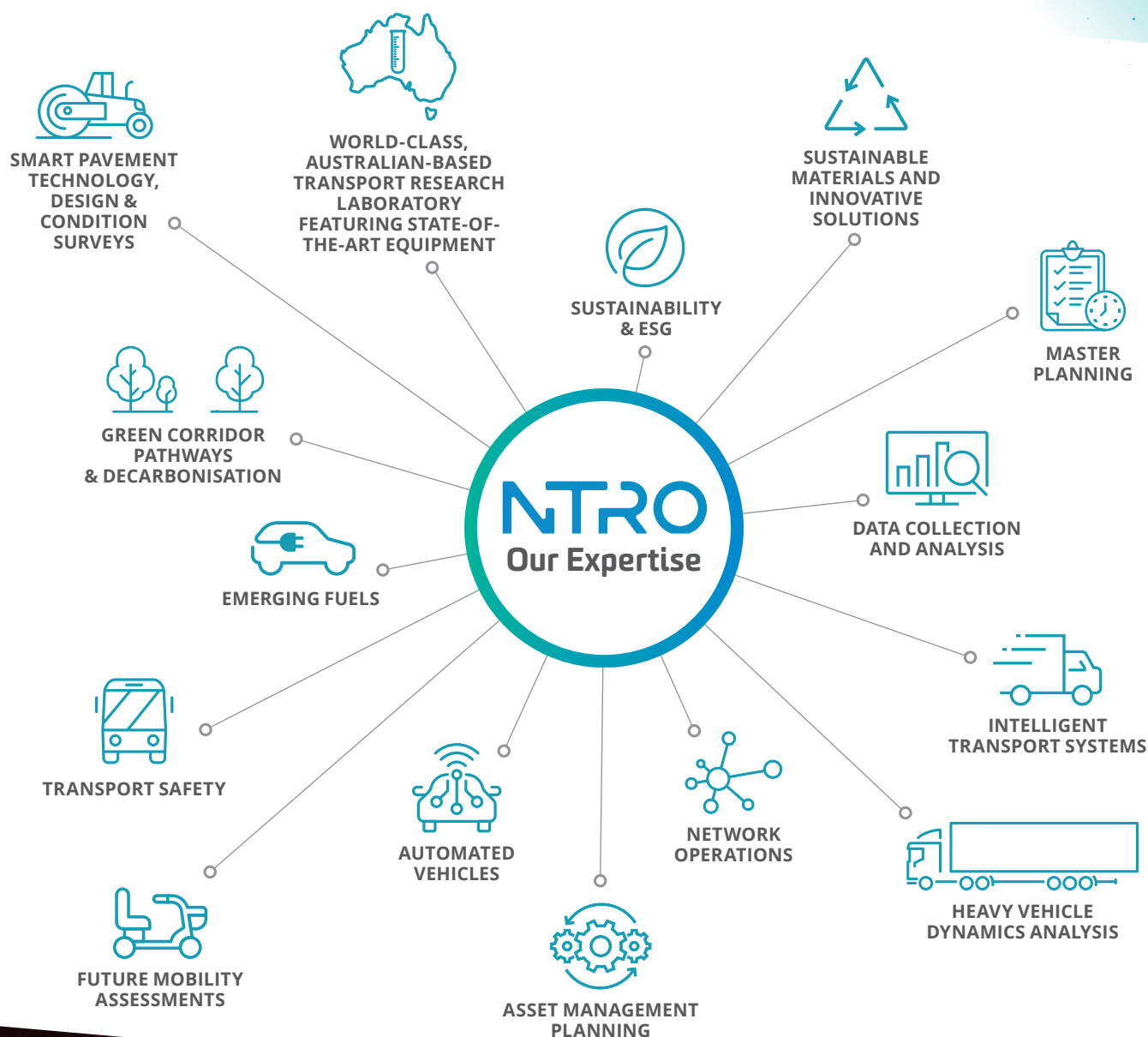


LIGHT RAIL
PROVIDERS



MINING &
EXPLORATION
COMPANIES





CONTACT

FOR MORE INFORMATION

NATIONAL TRANSPORT RESEARCH ORGANISATION

E: info@ntro.org.au | P: +61 3 9881 1555

W: NTRO.ORG.AU | A: 80A Turner St. Port Melbourne, VIC 3207

OFFICES IN: Adelaide, Brisbane, Canberra, Melbourne, Perth, Sydney

SCAN ME



NTRO